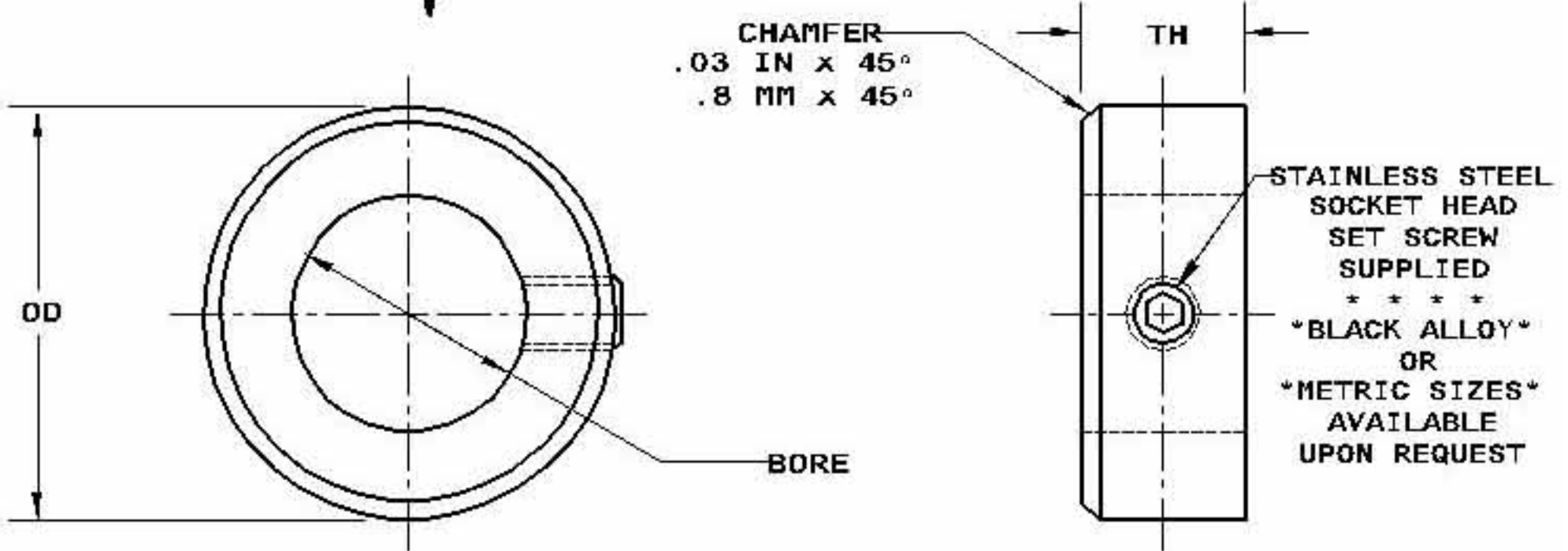


CR3

SERIES

PAGE 22
COMMERCIAL COLLARS
1 SCREW TYPE



SUFFIX	MATERIAL	FINISH
S	STAINLESS STEEL 303	CLEAR PASSIVATE

TOLERANCES			
INCH		METRIC	
.XX	±.016	.X	±.4
.XXX	±.005	.XX	±.13

CATALOG NO.	SUFFIX	BORE		BORE TOLERANCE		OD		TH		SCREW		
		IN	MM	IN	MM	IN	MM	IN	MM	IN & MM*		
CR3-0712.079	S	.079	2.00	+.001	+.026	.22	5.6	.12	3.1	0-80		
CR3-0812.078	S	.078	1.98			.25	6.3	.12	3.1	0-80		
CR3-0812.094	S	.094	2.39			.312	7.92	.18	4.6	2-56		
CR3-1018.118	S	.118	3.00			.375	9.53	.22	5.6	4-40		
CR3-1018.120	S	.120	3.05			.375	9.53	.25	6.4	4-40		
CR3-1018.125	S	.125	3.18			.500	12.70	.25	6.4	6-32		
CR3-1018.156	S	.156	3.96			.562	14.27	.28	7.1	6-32		
CR3-1018.157	S	.157	4.00			.750	19.05	.37	9.4	10-32		
CR3-1222.187	S	.187	4.75			+.002	+.051	.875	22.23	.43	10.9	1/4-20
CR3-1222.197	S	.197	5.00					1.000	25.40	.50	12.7	1/4-20
CR3-1225.125	S	.125	3.18	1.125	28.58			.50	12.7	1/4-20		
CR3-1625.236	S	.236	6.00	1.250	31.75			.56	14.2	5/16-18		
CR3-1625.250	S	.250	6.35	1.500	38.10			.56	14.2	5/16-18		
CR3-1828.313	S	.313	7.95	1.625	41.91			.62	15.7	5/16-18		
CR3-1828.315	S	.315	8.00	1.625	41.91			.62	15.7	5/16-18		
CR3-2437.375	S	.375	9.53	1.750	44.45			.62	15.7	5/16-18		
CR3-2437.394	S	.394	10.00	2.000	50.80			.69	17.5	3/8-16		
CR3-2843.438	S	.438	11.13	+.003	+.076			2.250	57.15	.75	19.0	3/8-16
CR3-2843.472	S	.472	12.00			2.750	69.85	.87	22.1	3/8-16		
CR3-3250.500	S	.500	12.70			3.000	72.20	.87	22.1	3/8-16		
CR3-3250.551	S	.551	14.00									
CR3-3250.563	S	.563	14.30									
CR3-3250.591	S	.591	15.00									
CR3-3650.625	S	.625	15.88									
CR3-3650.630	S	.630	16.00									
CR3-3650.669	S	.669	17.00									
CR3-4056.688	S	.688	17.48									
CR3-4056.750	S	.750	19.05									
CR3-4056.787	S	.787	20.00									
CR3-4856.875	S	.875	22.23									
CR3-5262.938	S	.938	23.83									
CR3-5262.984	S	.984	25.00									
CR3-52621.000	S	1.000	25.40									
CR3-56621.125	S	1.125	28.58									
CR3-56621.181	S	1.181	30.00									
CR3-56621.188	S	1.188	30.18									
CR3-64691.250	S	1.250	31.75									
CR3-64691.313	S	1.313	33.35									
CR3-72751.375	S	1.375	34.93									
CR3-72751.378	S	1.378	35.00									
CR3-72751.500	S	1.500	38.10									
CR3-72751.563	S	1.563	39.70									
CR3-72751.575	S	1.575	40.00									
CR3-88871.750	S	1.750	44.45									
CR3-88871.772	S	1.772	45.00									
CR3-96871.969	S	1.969	50.00									
CR3-96872.000	S	2.000	50.80									
CR3-96872.125	S	2.125	53.99									
CR3-96872.165	S	2.165	55.00									
CR3-96872.188	S	2.188	55.58									
CR3-96872.250	S	2.250	57.15									
CR3-96872.362	S	2.362	60.00									
CR3-96872.375	S	2.375	60.33									

IMPULSE MECHANISMS INC

78-82 N INDUSTRY CT
DEER PARK NY 11729
TEL (631) 586-5755
FAX (631) 586-5757